

*Japan No.1 B2B cosmetic exhibition*

# COSME Week

**2025 OSAKA SHOW**



**2025/9/24 ~ 9/26**



**INTEX Osaka, Japan**

Built by



In the business of  
building businesses

Organiser: RX Japan Ltd.

**2026 TOKYO SHOW**



**2026/1/14 ~ 1/16**



**Tokyo Big Sight, Japan**

# RX Japan

## Global Statistic:

- 350 events over 25 countries
- Across 42 industries
- World 2<sup>nd</sup> Largest show organizer

## Japan Statistic:

- 90+ exhibition a year
- 38 years of history in Japan
- Japan Largest show organizer





# 16 years of History for COSME WEEK:

## 2011

Started Cosme Tokyo  
(Finished product) as  
request by distributors

## 2009-2024

A continuous  
growth of size  
of exhibitor and  
visitors

## 2009

Separated from  
Interphex in  
response the need  
of cosmetic  
exhibition

## 2020

Continued exhibition  
to support the  
cosmetic industry  
during COVID

## 2025

The only BtoB  
international  
exhibition in Japan

## Feature 1: Only international exhibition in Japan



**2024 Exhibitors: 717**  
**International exhibitor : 271 (40%)**  
**From 19 different countries**

**2024 Visitors: 33970**  
**From 50 different countries**

## Feature 2: High ratio of Decision maker

# Who will you meet

Buyers who can support your initial entry into Japan will be present at COSME WEEK



Retailers



Distributors



Brands



### Distributors/ Importers

Import & register  
Your products in Japan

ARATA  
PALTAC  
MITSUBISHI  
KATASE

IDA RYOGOKUDO  
CHUO BUSSAN  
TAKIGAWA  
OHYAMA

MAKE UP  
ITOCHU  
DOSHISYA  
TOKYODO  
etc.



### Cosmetics Brands

Import & use  
your products / services  
to improve their brands

ALBION  
KAO  
KOSE  
FANCL  
MILBON

KANEBO COSMETICS  
NOEVIR  
ORBIS  
SHISEIDO  
JOHNSON & JOHNSON

NIVEA-KAOCBON  
DHC  
POLA  
ISEHAN  
etc.



**41%** of the visitors  
are **Decision Makers!**



## Feature 3: Specialized show within COSME WEEK

### COSME Tech



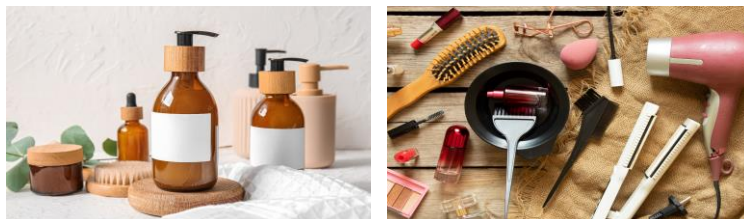
- ◆ OEM, Private Label
- ◆ Packaging / Containers
- ◆ Ingredients etc.

### COSME TOKYO



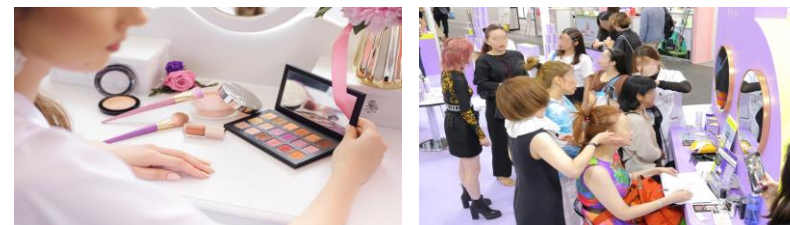
- ◆ Skin/Body Care
- ◆ Organic Products
- ◆ Makeup etc.

### HAIR EXPO TOKYO



- ◆ Shampoo, Treatment
- ◆ Hair Care Products
- ◆ OEM, Private Label etc.

### COSMETICS MARKETING EXPO



- ◆ Web/EC Support
- ◆ Advertisement
- ◆ Marketing Tools etc.

## Results from previous show



### Exhibitor's voice



Exchanged business cards with over **150 buyers** and met with both large and small **trading companies**. Immediately after the event, **we secured one order and are now selling in Japan!**

*Cosmetic brand From Poland*



The event attracted numerous visitors with clear objectives, enabling us to have meaningful meetings. Notably, we met **decision-makers from major companies such as Shiseido, Kose, and Pola**—contacts that are difficult to reach through traditional methods.

*Ingredient company From France*

# Special event on COSME WEEK!

Website promotion:  
Featured Page for overseas exhibitor's products  
on the official website.

## Benefits:

- ✓ **Remind visitors about your company from last show.**
- ✓ **Showcase your company to visitors when they are planning their day!**

## Overseas Exhibitor Introduction

This exhibition will feature many overseas exhibitors from Asia, Europe and the US.  
It is a rare opportunity to see a wide range of overseas products, from raw materials and containers to finished cosmetic products, all at once!

### Themes List



[Overseas raw materials >](#)



[Containers made overseas >](#)



[Korean cosmetics >](#)



[Overseas cosmetics >](#)

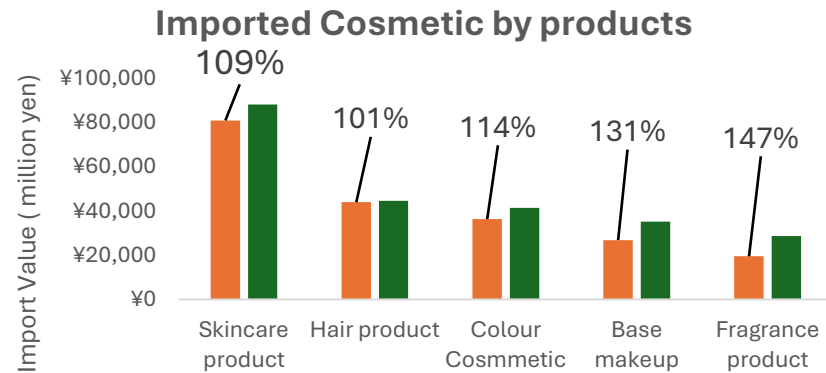
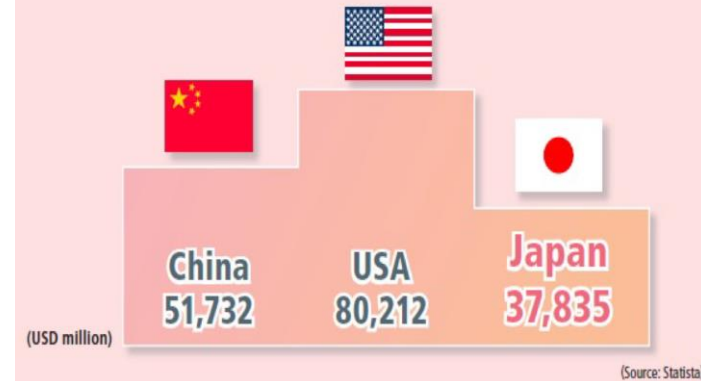
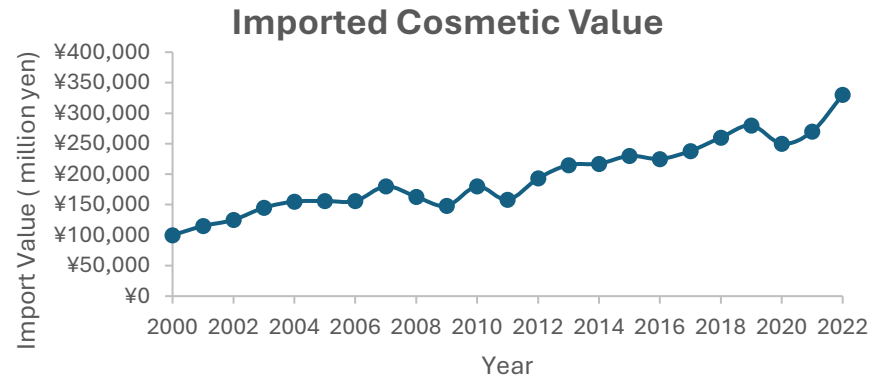
Many other international companies will also be exhibiting at this exhibition!

[View overseas exhibitors >](#)



# Japan Market

1. Significant Increase in Import Values
2. Among the Top 3 Cosmetic-Consuming Countries
3. Growing Trend of Purchasing International Products



## Majority of Trading companies and distributor:

Seeking international products that are new to the market and have not yet been introduced in Japan!

# Japan Market

**The demand from Japanese distributors and brands is increasing!**

**Start building your long and stable relationships today! (10 years, 20 years, and beyond)**





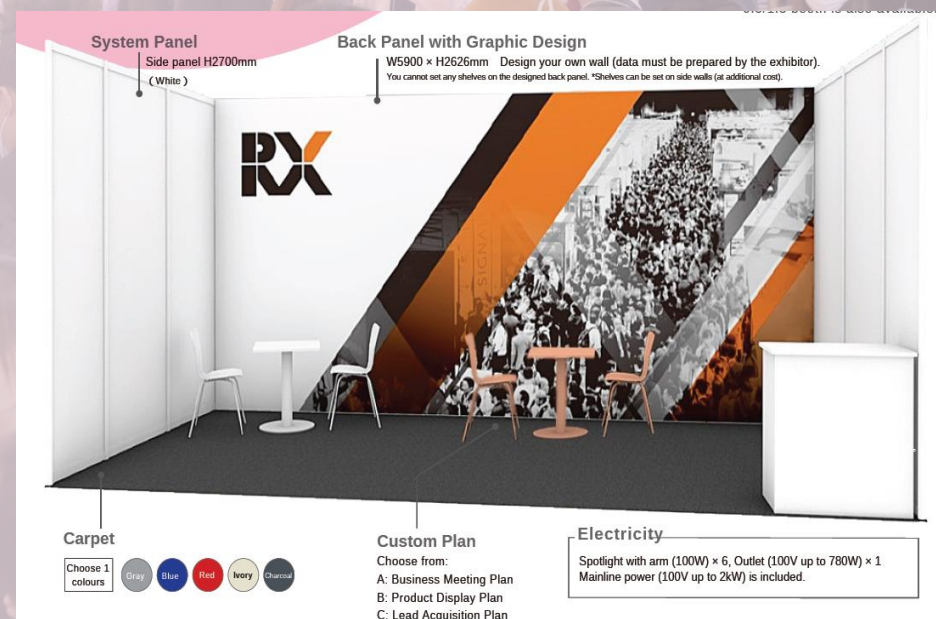
# Exhibition Fee (1 booth 16.2sqm)

## OSAKA SHOW 2025/09

Raw Space	1,070,000JPY
Rental Display	580,000JPY
Expo Master	50,000JPY
Total	1,700,000JPY
	(USD ~10,747 EUR ~10,431)

## TOKYO SHOW 2026/01

Raw Space	1,170,000JPY
Rental Display	580,000JPY
Expo Master	50,000JPY
Total	1,800,000JPY
	(USD ~11,379 EUR ~11,044)





# COSME Week

*Pick a time to consult* >

*Request for pricing* >



## Contact Us

RX Japan Ltd. | COSME Week Show Management  
11F Tokyo Midtown Yaesu, 2-2-1 Yaesu, Chuo-ku, Tokyo 104-0028, Japan

Built by  
**RX** In the business of  
building businesses



+81-90-6061



<https://www.cosme-week.jp/tokyo/en-gb.html>



[minghei.leung@rxglboal.com](mailto:minghei.leung@rxglboal.com)